



The ultimate hoof care system

OWNER / FIRST TIME BUYER

# COMPLETE MANUAL

[FORMAHOOF.COM](http://FORMAHOOF.COM)

# TABLE OF CONTENTS

**03** FormaHoof  
Introduction

---

**04** How FormaHoof  
Works

---

**07** Finding The Right  
FormaHoof Size

---

**08** What Mould Type  
Should I Choose

---

**09** Preparing For A  
FormaHoof Application

---

**12** Mesh Step-by-Step  
Guide

---

**13** FormaHoof  
Application Guide

---

**16** FormaHoof  
Removal Guide

---

**17** Post-Application  
Checklist

---

**18** FormaHoof  
Frequently Asked

---

**22** FormaHoof Success  
Stories

**23** Getting Started with  
a Local Professional





# Introduction

Keeping your horse's hooves healthy and pain-free is essential to their well-being, but it can also be a daunting task. As a horse owner, you know how important it is to provide the best possible care for your equine friend, but the complexities of hoof care can be overwhelming. That's where FormaHoof comes in.

FormaHoof is the answer to all your equine hoof care needs. It's a revolutionary system that encapsulates and supports the hoof, promoting natural healing and growth. Whether your horse is suffering from a specific condition or you simply want to maintain their hoof health, FormaHoof is the perfect solution.

## The Importance of Proper Hoof Care

We understand the challenges that come with managing your horse's hoof care. It's not just about keeping them comfortable and pain-free, but also ensuring their mobility and overall quality of life. That's why we've developed FormaHoof – a system that takes into account all the unique needs of horses and their hooves.

In this manual, we'll provide you with all the information you need to understand why FormaHoof is the best choice for your horse's hoof care. From the basics of the system to real-life success stories, we'll show you how FormaHoof can help your horse live their best life. So, let's dive in and discover the power of FormaHoof together!





## How Does FormaHoof Work?

FormaHoof works by encapsulating the hoof and redistributing forces across the entire hoof capsule. This is achieved through the use of a FormaHoof Mould that is temporarily placed onto the horse's freshly trimmed hoof. The Advanced Polymer is then pumped into the Mould to provide a liquid fit comfort layer that sets in just 7-10 minutes.

Once the FormaHoof protective application is complete, it can be rasped or trimmed according to the needs of the specific hoof. The application acts and wears exactly like healthy hoof horn, making it suitable for a wide range of horses, including those in rehab or those engaged in various equine sports.

One of the key benefits of FormaHoof is its customizability. The application is trimmable just like a natural hoof, which allows for adjustment of angles where required. This makes it possible to provide unique 3D support for a concave sole, corrected and leveled heels, and weight distribution across the entire hoof capsule. These factors encourage blood flow, circulation, and healthy hoof growth, while also protecting the whole foot within a moisture-controlled environment.

To ensure optimal results, FormaHoof is designed to work in conjunction with official FormaHoof products purchased via our online store. These products help to achieve the perfect FormaHoof application and ensure that your horse's hooves are bacteria-free before the application. Please note, third party substitutes for Advanced Polymer will damage your Mould and potentially your horse's hoof. Overall, FormaHoof provides a comprehensive and innovative solution to hoof care that is suitable for horses of all kinds.

# Components of the FormaHoof Hoof Care System

## FormaHoof Mould



A key component of the FormaHoof Hoof Care System. Available in a variety of sizes that fit the unique shape and size of each hoof.

The Mould is used to create a liquid fit comfort layer around the hoof. With different types of Moulds available, you can select the one that best suits your horse's needs, providing unique 3D support, weight distribution, and protection within a moisture-controlled environment.

---

## Advanced Polymer



FormaHoof Advanced Polymer is a specially formulated liquid polyurethane that is pumped into and around the hoof and FormaHoof Mould.

After just 7-10 minutes, the FormaHoof Mould can be removed to reveal the final FormaHoof application, which acts and wears exactly like healthy hoof horn. The result is a perfectly shaped and balanced hoof that supports healthy blood flow, circulation, and hoof growth.



Third party substitutes for Advanced Polymer will damage your Mould and potentially your horse's hoof.





## Applicator Gun



Holds a FormaHoof AP cartridge firmly, enabling a smooth, controlled flow of Advanced Polymer into your reusable FormaHoof Mould.

---

## Mixing Tips



Helps you to achieve the perfect FormaHoof Application, by providing the correct Advanced Polymer mix into your reusable FormaHoof Mould.

---

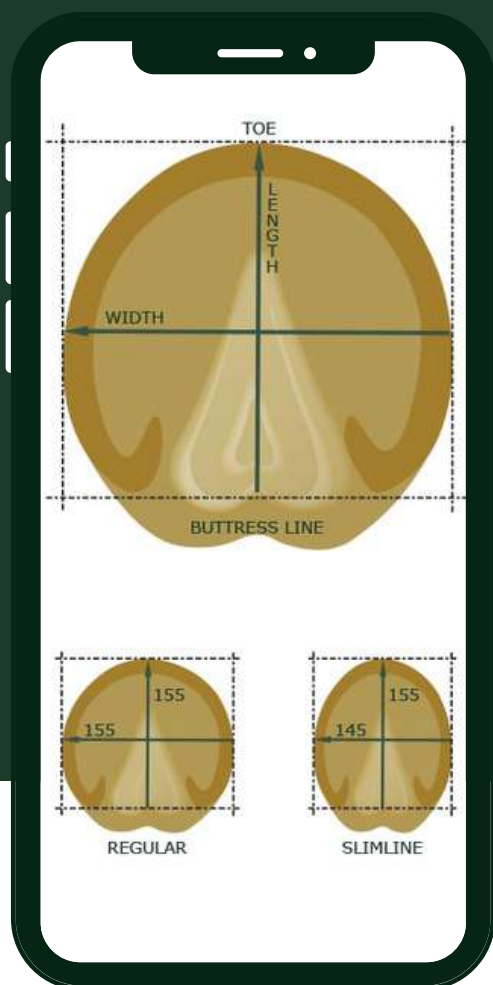
## Mesh



Mesh is folded around the prepared hoof before the hoof is placed in a Mould. Providing additional structural support and stability to the Advanced Polymer.

We provide free mesh with initial orders (Moulds and Kits). For subsequent orders, we recommend using the Coolaroo 302214 Screening Shade Fabric in 70% UV Block, (6' x 15') as it has been thoroughly tested by our team. You can find it on Amazon, eBay, and in various hardware shops in many countries.

# Finding the Right FormaHoof Size



Start by cleaning your horse's hoof and measuring its length and width using the diagram provided. Do not include the bulbs of the heel. Once you have your measurements, find the range they fall into on the size chart.

## Size Chart

| Mould Size | MM Range | IN Range |
|------------|----------|----------|
| 00         | 60-75    | 2.3-2.9  |
| 0          | 76-90    | 3.0-3.5  |
| 1          | 91-100   | 3.6-3.9  |
| 2          | 101-110  | 4.0-4.3  |
| 3          | 111-120  | 4.4-4.7  |
| 4          | 121-125  | 4.8-4.9  |
| 4.5        | 126-135  | 5.0-5.3  |
| 5          | 136-140  | 5.4-5.5  |
| 6          | 141-150  | 5.6-5.9  |
| 7          | 151-160  | 6.0-6.2  |
| 8          | 161-172  | 6.3-6.7  |
| 9          | 173-185  | 6.8-7.2  |
| 10         | 186-197  | 7.3-7.7  |
| 11         | 198-207  | 7.8-8.1  |

## FormaHoof Fit: Regular or Slimline

Choosing the right FormaHoof Fit is important for getting the perfect fit. Regular is best for front feet, while Slimline works well for narrow front feet and hind feet. And if there are significant differences in the Length and Width of your horse's hooves due to an underlying condition, always go for the larger measurement.



# What Mould Type Should I Choose?

## Barefoot

The Formahoof Barefoot Mould is the base model and the most versatile option, suitable for most horses in normal work conditions or during rehabilitation from many hoof-related pathologies.



## Traction

All the benefits of the Barefoot Mould but with the added bonus of customizable studs that can be rasped to the required length, giving your horse the traction it needs for optimal performance.



## Performance

Designed for racehorses to quickly resolve common hoof problems while maintaining a balanced and healthy hoof, while also complying with racing regulations by being combined with a regular shoe.





# Preparing For A FormaHoof Application



## 1. Choose who will Apply FormaHoof

Do it yourself\*, hire a professional, or find an applicator on our website. First-timers often benefit from an extra set of hands on application day.



## 2. Select the right Mould For Your Horse

Choose the best Mould for your horse and its environment. Kits include a reusable Mould and all consumable components needed for an application.



## 3. Store Advanced Polymer Correctly

It's important to store the Advanced Polymer correctly until the day of application. Guidelines are on the product page and will be sent via email.



## 4. Prepare Your Horse

On the day of application, ensure your horse has been freshly trimmed and is in a calming and familiar environment.

\*It is mandatory to be a qualified farrier in the UK to affix any permanent shoeing in accordance with The Farriers (Registration) Act 1975

# 3 EASY STEPS TO ORDER ONLINE



1.

## VISIT OUR ONLINE SHOP

Visit [forma hoof.com/shop](https://forma hoof.com/shop) to browse  
FormaHoof official products.  
US & EU distribution centres,  
Worldwide Delivery!

2.

## ADD YOUR ITEMS

Select your preferred products.  
A Kit contains everything you need  
to get started!

3.

## PLACE YOUR ORDER!

Choose to create account and earn  
Happy Hoof Reward points.

**SHOP NOW**

# 5 Tips For Third-Party Tools



## 1. Silicon Spray

Cleaning your FormaHoof Moulds regularly with a good quality silicon-based spray will extend their life and help prevent damage. At FormaHoof, we use WD-40 Silicon, but other brands can work as well.

## 2. Antibacterial

A good antibacterial treatment can ensure the cleanliness of the hoof before application. We recommend Red Horse Sole Cleanse from the FormaHoof Shop, but medical alcohol is also an option.



## 3. A Good Rasp

Using the right rasp can help prepare the hoof and wall for the application. We suggest using a Cody James (medium) rasp to prepare the wall and a regular rasp to trim and prepare the barefoot hoof as normal. A Shinto rasp can also be used to prepare smaller feet more easily.

## 4. Dental Impression Material (DIM)

DIM can be used in small quantities around the frog or to fill gaps where there are large cracks in the hoof wall. It's also recommended to use a small amount of copper sulphate with DIM for long-term disinfection of infected areas, especially if the horse has thrush or white line disease.



## 5. Copper Sulphate

Copper sulphate can be added to DIM to prevent and treat thrush, as well as support white line disease treatment. However, it should be used with caution and in small amounts, as overuse can be counterproductive. Always wear gloves when handling copper sulphate.



# Mesh Prep

## For a FormaHoof Application



1

### Cut Mesh to Size

Start by cutting the Mesh to the appropriate size for the Mould. FormaHoof Moulds starting around size 4.5 will benefit from a two-layered fold before cutting to size



2

### Fold the Mesh

At the one end of the Mesh double back and then fold corners in very much like the starting to make a paper airplane. This creates a sort of pocket for the toe to slide into.



3

### Wrap the Mesh

Wrap the Mesh around the hoof by placing the folded end at the toe and carefully positioning the rest of the Mesh around the hoof. Hold the Mesh firmly but gently pull it back towards the heel of the hoof to ensure a snug and secure fit.



4

### Fit the Mould

Place the Mould over the mesh from toe to heel, and allow the horse to stand down into it to make sure it is in place and comfortable. This will give additional strength to the application to ensure that it is held together for the duration of the shoeing cycle.

# FormaHoof

## Application Guide



1

### Prepare the Hooves

Before applying FormaHoof, make sure to pull off the horse's shoes and trim their hooves. It's important to ensure that the hooves are clean and free of any debris.

### Prepare the Advanced Polymer

Add the Mixing Tips to the top of the tube of Advanced Polymer and place it in the Applicator Gun. Purge the tube by pulling the trigger until the Advanced Polymer is mixing correctly.

2





3

### Fit the Mould

Make sure you have your FormaHoof Mould to hand and that it is free of any debris. Wrap the mesh (or Flex Mesh) around the prepared hoof and fit the mould. It's important to ensure that the top lip of the Mould is tight to the hoof, as it's the shape rather than adhesion that keeps the final application in place.

### Apply Advanced Polymer

Beginning at the toe, and moving across the sole (toe to heel). Use the Applicator Gun to fill in the application points on the Mould with the Advanced Polymer. You should start at the toe and work your way around the sole before finishing with the application points around the sides. Make sure the Mould is completely filled with Advanced Polymer and it is normal to see some overflow.

4





## Allow Advanced Polymer Time to Cure

Within 7-10 minutes, the Advanced Polymer will be fully cured. The application points in the Mould will have some cured Advanced Polymer coming out of them, so to avoid damage to the Mould use a nipper to remove the excess where required. Carefully loosen the seal on the top line of the Mould (do not use a knife) and remove the Mould.

5



6

## Finish the Application

Clip off all remaining application points and clean off any excess material. Give the application its finish and make further adjustments if needed.

# FormaHoof

## Removal Guide



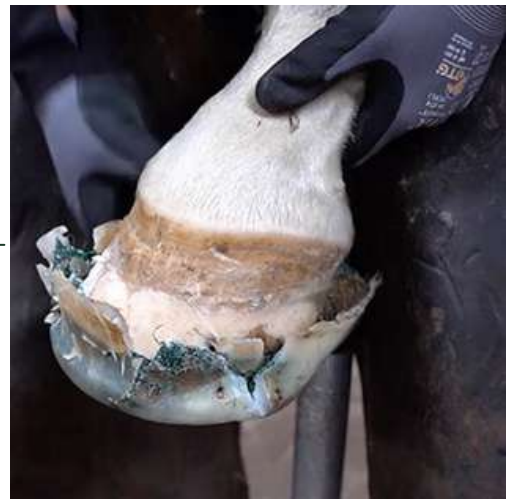
1

### Rasp Carefully

Remove the old shoe (if applicable) and use a rasp to gently file down the edges of the FormaHoof application, being careful not to rasp into the hoof wall. This will help to loosen the application and make it easier to remove.

**Loosen the Seal**  
Use your nippers to carefully loosen the seal of the application. Be sure to start at the heel and work your way towards the toe, making small cuts in the application as you go. This will help to avoid damaging the hoof wall.

2



3

### Pull Heel to Toe

Once you have loosened the application, you can begin to remove it from the hoof. It is best to start at the heel and pull gently towards the toe. Use a blunt pair of nippers if possible, as sharp nippers may cut through the application and damage the hoof wall.



# POST APPLICATION

## Checklist

☐

Monitor your horse's progress and behavior after the application.

☐

Gradually introduce movement and exercise to your horse over time to avoid disrupting the healing process.

☐

Share your horse's FormaHoof progress on social media using the tags @FormaHoof or #FormaHoof

☐

Store the FormaHoof Mould in a cool, dry place away from direct sunlight, heat sources, or frost.

☐

Clean and maintain your FormaHoof Moulds regularly with a silicon spray.

☐

Store the FormaHoof Advanced Polymer in a cool, dry place away from direct sunlight, heat sources, or frost. The ideal storage and working temperature is 12-26 degrees Celsius (55-78 Fahrenheit).



# FormaHoof FAQs

What is FormaHoof?

FormaHoof is a non-invasive, 3D protective hoof support system, liquid fit, and designed to operate like a healthy hoof, providing protection while allowing the horse to move comfortably.

How is FormaHoof different from normal horseshoes?

FormaHoof's 3D application offers conformation support, lift and protection, which is not possible with traditional 2D horseshoes. FormaHoof's non-invasive (nail-free) solution offers enhanced protection to horses' feet.

Is FormaHoof a glue-on shoe?

No, FormaHoof is not a glue-on shoe. FormaHoof Advanced Polymer is a very mild adhesive, but it is the shape of the application that keeps it on the hoof, meaning that there is no damage to the hoof upon removal.

How does FormaHoof support the hoof?

FormaHoof enhances the natural, healthy function of the hoof by correcting any conformational faults or imbalances, providing the hoof and limb with correct, functional support and protection. The application flex's with the horse's hoof movements.

What hoof problems can FormaHoof be used for?

FormaHoof can be used to treat a wide variety of hoof pathologies, including laminitis, navicular, white line disease, abscesses, bruising, increase sole depth, heal hoof cracks and correct Negative Palmar/Plantar Angles and more!

Does the hoof breathe in FormaHoof?

Hooves do not breathe. However, good hoof preparation is important to create a clean and bacteria/fungus-free environment prior to application to prevent any "hoof funk" from forming underneath the application.

Can I ride in FormaHoof?

FormaHoof is designed to support your horse's hooves during any activity, whether it's jumping, dressage, trail riding, or any other discipline. In fact, many riders have reported improved performance and increased comfort in their horses.

Who can apply FormaHoof?

To get the best results, FormaHoof applications are recommended to be carried out by professional trained hoof care provider. It is not mandatory to be a FormaHoof Certified Applicator before applying FormaHoof and many self trimming owners have found success applying FormaHoof themselves.\*

Does the hoof breathe in FormaHoof?

Hooves do not breathe. However, good hoof preparation is important to create a clean and bacteria/fungus-free environment prior to application to prevent any "hoof funk" from forming underneath the application.

\*It is mandatory to be a qualified farrier in the UK to affix any permanent shoeing in accordance with The Farriers (Registration) Act 1975



How can I find a farrier, trimmer or vet applying FormaHoof in my area?

You can find the closest professional providing certified FormaHoof services through the applicator search. However, it is possible to get started with your trusted farrier, trimmer, equine podiatrist or vet at any time.

How long does a FormaHoof application last?

A FormaHoof application usually lasts for the length of your horse's regular shoeing cycle, meaning an average of 6-8 weeks, depending upon the natural rate of your horse's hoof growth and wear through work and type of surface.



**We're here to help!**

**[CustomerCare@FormaHoof.com](mailto:CustomerCare@FormaHoof.com)**

For Any Other Questions and Advice



## FormaHoof Case Study: Hugo's Laminitis Journey

Hugo is a 13-year-old show horse that experienced two strange episodes just 5 days apart in January. These episodes caused him to be taken off his feet in his stable. Hugo was referred to a clinic at Newmarket for several tests, including neurological examinations, blood tests, CT scan, and x-rays of his whole body. Unfortunately, the cause of the episode could not be identified.

To manage his pain, Hugo was put on an all-fiber diet that included Happy hoof, and painkillers were added. He was also given two half doses of steroid injections into his joints. However, this resulted in Hugo developing symptoms of laminitis within 48 hours.

Six months later, Hugo started experiencing intermittent lameness and became crippled. X-rays revealed that he had rotated and foundered in both front feet. In addition, Hugo showed symptoms that could possibly relate to Cushing's disease. Blood tests confirmed that he was insulin resistant and had Equine metabolic syndrome. Hugo's owners had been managing his condition with slippers, but due to his habit of door banging, he frequently broke the glue, which left him crippled.

After searching for a solution, Hugo's owners came across a post about FormaHoof and contacted us. They applied FormaHoof for the first time at the end of November and were pleased with the results. Hugo was able to walk freely and be turned out immediately after the application.



Two weeks after the first FormaHoof application, Hugo was found to have an abscess in his toe due to necrotic tissue in his hoof being squeezed out. His farrier opened up the apex of the toe, allowing the abscess to drain, while still allowing Hugo to have the support of the FormaHoof on the heel and sole. Within a couple of days, Hugo felt much better and was able to walk around freely again.

In December, Hugo had his first FormaHoof application removed and showed good foot growth. The progress looked promising, and a second pair was applied. Hugo was feeling fantastic in the applications, bucking and rearing in his paddock, which was not possible before due to his lameness.



About a year after his first episode, Hugo's foot had grown enough to cause the FormaHoof to pop off in his bed overnight. However, this was not due to faulty work, but because the hoof had started to remodel, recover and rehabilitate from the severe damage, and grew out of the application. FormaHoof allowed the hoof to expand while providing maximum support.

Throughout Hugo's journey with laminitis, FormaHoof allowed his hoof to flex and weight to be spread over the entire sole, supporting blood flow, allowing hooves to grow faster and improve posture. Hugo's journey with laminitis has been a long and challenging one, but with the help of FormaHoof, he has made significant progress. His owners can turn him out and allow him to enjoy the sunny winter days, which was not possible before the application. Although there were some setbacks along the way, FormaHoof helped Hugo to recover and rehabilitate from his severe laminitis.





## FormaHoof Case Study: Malva's White Line Disease

Malva, a 17-year-old draught mare, was presented to Aletia, a FormaHoof Expert and Certified Applicator, for treatment following a laminitis episode and subsequent severe white line disease in late September 2020. Malva's feet had massive cracks right in the middle of her hooves, and she was quite lame. Aletia immediately recommended x-rays and worked with a veterinarian to make a plan. Firstly, the enormous hoof cracks needed to be resected and cleaned.

After a hoof wall resection, FormaHoof was applied three times during a 6 month period. Malva's hooves were treated with copper sulphate and antibacterial spray before FormaHoof was applied to ensure the cleanliness of the resected areas. Malva's comfort level increased instantaneously when FormaHoof was applied. She could be turned out during recovery and remained sound throughout, with a successful and sound transition to barefoot in January 2021.

FormaHoof provided structural support and a clean environment for Malva's hoof to grow back healthy. She was immediately more sound following the application, and her hooves were able to grow back strong, in an infection-free environment. After three applications, Malva returned to barefoot and is now comfortable, and able to live her best life.





White line disease in horses is characterized by invading or opportunistic bacteria or fungi that destroy hoof-wall tissue. If left untreated, it can affect the entire inner hoof wall, resulting in lameness, hoof wall separation, and loss of stability of the entire hoof. A healthy hoof acts as a barrier against invasion of these microorganisms, but in an unhealthy hoof, cracks or fissures can allow the bacteria or fungi to enter and infection to set in.



FormaHoof provides instant, drug-free pain relief, stabilizes resected areas, keeps medication in place, and allows the hoof to grow in a clean and controlled environment. With the support and encapsulation of the hoof, most horses return to training in no time, as the application allows the horse to spread weight over the entire hoof and takes pressure off the wall. The increased weight-bearing allows better blood flow to the entire foot, encouraging healthy hoof growth.

In conclusion, FormaHoof allowed for successful treatment of Malva's white line disease. Traditional methods are time and care-intensive, but FormaHoof applications allow contact hours to be reduced for everyone involved in the treatment cycles. FormaHoof gives owners, farriers, and vets peace of mind during white line disease treatment, with immense time savings and enhanced comfort for the horse.



## FormaHoof Case Study: Thoroughbred Feet

Farriers have been traditionally responsible for caring and maintaining horses' feet using a range of techniques and materials. However, the advancements in technology have provided farriers with innovative solutions to tackle common challenges, especially with thoroughbred (TB) horses' feet. Sven, a farrier with over 15 years of experience and an Expert FormaHoof Certified Applicator, highlights the benefits of using FormaHoof, a 3D shoeing solution, to improve the health and wellbeing of TB and off the track thoroughbred (OTTB) horses' feet.

Working with racehorses' feet after their racing careers are finished is a common challenge faced by farriers. Many horses finish their racing careers with flat, crushed heels, leading to negative palmer/planter angles and a breakdown in their feet's functionality. Sven suggests that farriers should explore advancing techniques and materials to help with horse care, such as FormaHoof.

Farriers have difficulty re-booting the caudal aspect of the foot, leading to expensive therapeutic shoeing packages for the horse's rest of the working life. However, FormaHoof provides an effective solution to support horses' recovery and improve the function of their feet. The 3D fit of the FormaHoof system enables farriers to offload the loading structures of the feet, realign the bony column, and effect better blood supply to the foot. This increases the horse's comfort and gives their body the best chance to re-grow the heel structure and suspension system for the foot.



**Left front before we started**



Near side front

**Left foot after first application**



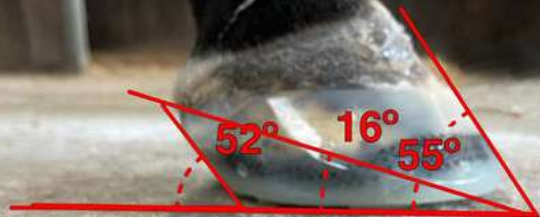
Near side front

**Right front before we started**



Off side front

**Right foot after first application**



Off side front

While FormaHoof may appear expensive at first glance compared to most remedial shoeing packages, it offers significant financial savings in the long term. Farriers can literally halve the shoeing cost over the horse's working life.

Many thoroughbred horses currently racing and retired from racing are being managed with FormaHoof. The system allows for adjustments to the heel structure, bony column re-alignment, sole depth, and overall posture. FormaHoof also allows horses to be in work while making these adjustments, and the product can be applied while spelling horses in the paddock. Farriers can apply FormaHoof to help the feet recover, build up sole depth, healthy walls and heels, and transition horses to barefoot or regular shoeing.

Farriers can access online training modules provided by FormaHoof to help them apply the product. For owners keen to get started with FormaHoof, Sven suggests giving their farrier access to the training. FormaHoof is a game-changer in rehabilitating horses, helping these equine athletes live long and productive lives after racing.

FormaHoof is a cutting-edge technology that can help farriers, vets, hoof trimmers, and horse owners provide effective support to horses through their journey towards strong and healthy feet. Its innovative design and functionality make it an ideal solution for managing TB and OTTB horses' feet, ensuring that they can enjoy long, productive lives.

# Getting Started

When looking to get started with FormaHoof many horse owners have found FormaHoof Certified Applicators in their area. FCA's aren't employed by FormaHoof, they have completed our certification programme called the FormaHoof Certified Applicator course where applicators submit their applications to the FormaHoof Academy until they can demonstrate a perfect application. We offer a database of applicators who have chosen to list their FormaHoof services on our website.

If there are no FCAs in your area, and if your horse's usual hoof care provider is not experienced with FormaHoof, there are a few steps you can take to introduce them to the process and see if it's something they would be comfortable doing. Here's what we recommend:

1

Share relevant cases from our blog to show FormaHoof in action. This can help to pique your hoof care provider's interest and demonstrate the benefits of using FormaHoof.

2

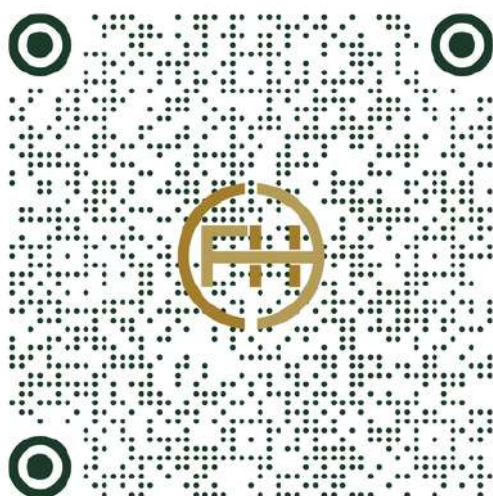
You can suggest that your hoof care provider enroll in the FormaHoof Basics tutorial available via our online shop for free. This will give them a good introduction to the process and its use cases.

3

If your hoof care provider is intrigued but not yet confident in applying FormaHoof, you can suggest that they take the FCA course to become certified. Once learned FormaHoof is a simple, repeatable process that gives fantastic results every time.



Ready to visit  
our website?



Scan Me

Open your  
camera  
and point here

## Contact Us



1800-521-0971



customer care  
@formahoof.com



FormaHoof.com

# Help Us Improve

## Complete Our Survey

Thank you for downloading the FormaHoof Complete Owner's/First Time Buyers manual. We are constantly working to improve our user experience, and your feedback is crucial in helping us achieve that goal. If you have just 3 minutes to spare, we would appreciate it if you could complete our survey and let us know your thoughts. Your feedback will help us to better understand your needs and how we can improve our products and services. Thank you in advance for your time and input!

Leave your feedback at:  
<https://www.surveymonkey.com/r/6LRGVV8>

